



OCTOBER 2022

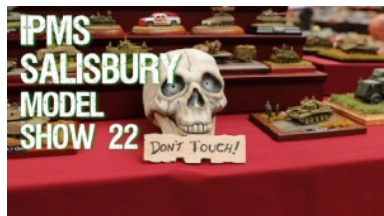


The screenshot shows the IPMS Salisbury website homepage. At the top, there's a navigation bar with links: Home, Contact Us, Salisbury Model Show, What's On, Group Builds, Club Stuff, Club Blogs, Members Gallery, and Models For Heroes. Below the navigation, there are three columns: 'Latest News' featuring 'South West Model Show 2022', 'Latest Blogs' featuring '20th Sept Club Night 2022' and '6th Sept Club Night 2022', and 'Previous Posts' with a list of recent events like '16th August Club BBQ 2022' and '20th Sept Club Night 2022'.

For those of you who do not know, we have a website full of useful stuff, Blogs, Newsletters, Builds, Calendar of Events and lots more. Check it out if you havent already, you might like it.

<https://ipmssalisbury.co.uk>

Check out the Model Show videos as well, tap or click on the images below...



Please Note:
 Articles and news are always welcome for inclusion in this newsletter. BUT views and information thus expressed are solely those of the author(s) and do not necessarily represent the views of the editor or the club as a whole.

Articles for the Dec 2022 Issue to me please by Nov 24th 2022
 Email me modelclub@ipmssalisbury.co.uk

Club News

NOTICE of AGM 1st Nov

Nominations for the following positions that will be vacated at the AGM:

Chairman - Richard C standing down

Hon Sec - Mike H standing down

These can be combined into one post, but if you want to share the load & love then nominations and proposers to me by 24th October.

Items of business for inclusion in the AGM to me please again by October 24th at the latest.

Thank you

Richard C



Calendar of Events

October	1st	MODEL SHOW - Abingdon
	4th	Theme Night - Navy
	15th	MODEL SHOW - REME
	18th	Club Night - IPMS Model Competition - open to IPMS members
November	1st	AGM & Telford prep & A4 Diorama Group Build Finish
	12th/13th	MODEL SHOW - TELFORD
	15th	Club Night - What I got from Telford plus debrief
	23rd	Last Call for December Newsletter Articles
December	6th	Club Night - In House Model Show
	20th	Club Night - Mince Pies and festive Cheer



Laser Cut Wooden Box - AK Interactive

In 1:35 scale these wooden boxes come on a single sheet and appear as high-quality, laser cut wooden sheets to recreate different types of Ammo boxes. The instructions say you can glue with PVA or cyanoacrylate. I used Rocket Card glue by Deluxe Materials, a much finer type of PVA. It was tricky. All joints are butt joints and the parts are multiple as handles and strakes are separate. A clear work space, sharp knife and tweezers were essential. I painted the external walls in Humbrol 30 spray and left the insides natural wood. Being an AK product the instructions state they can be finished with paint and weathering products. I will be ageing them slightly, remembering that these contain live ammo so the amount of degradation of the container should be minimal if the containers have been stored correctly. AK have 3 different sheets at present (and on sale in Salisbury Model Centre). I wanted Ammo containers for 120mm Russian Mortar rounds which are not offered so after assembling a plastic 120mm case used it as a model to cut the supplied wood parts up and re-size for the Russian case as well as add the interior unique to the Mortar container. Simple but effective and much more in scale than the plastic ammo boxes included in Zvezda's 120mm Mortar.

Sibo



Miniatur Wunderland

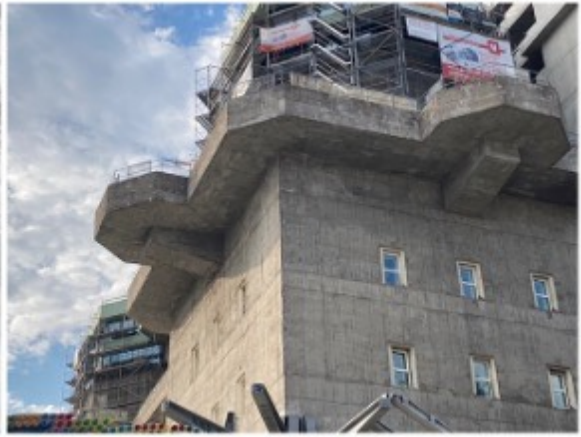
Ok! I know this is a Modelling club, not a Model railway club but hear me out- this article is about more than an amazing railway layout.

Halfway through August my family caught up on an overdue Covid delayed long weekend to Germany. A lot of ground was covered and after a 4 hour train journey we ended our weekend in Hamburg.

As an aside I took in the Flakturm IV, a first generation concrete tower and bunker that is placed central in the city. The bunker was provided with a space where up to 20,000 people could shelter during air raids by the allies. The bunker was equipped on the upper stories with Flak anti aircraft guns. After the war some were demolished, which proved a difficult task so the remaining were converted into residential buildings.

As my comparison picture shows and to be expected, the ugly towers are slowly being clad and added to, hiding the brutal look of their original purpose. I was a little disappointed but still took a picture; I have no intention of building the Takom 1/350 kit of the tower so no loss from the research front.

continued....



However the main reason to get to Hamburg was to visit the world famous ‘**Miniatur Wunderland**’ (German name for miniature wonderland) the largest model railway in the world. The layout covers 16,630 sq ft so has so much more than just trains and why from a modelling point of view it is so

impressive. The working replica of Hamburg Airport alone takes a whole room, and as the layout is in 1/87 scale features a huge range of scratch built aircraft all with working lights, rolling wheels (to allow taxiing after landing) , sounds and where applicable turning props. The harbour area has 1/87 scale ships all radio controlled that move into the docks, this area obviously has a real basin of water while resin is used in other areas such as Venice. These other areas (as of 2021 there are 14) include Italy, USA, Swiss Alps, South America and the Hartz Mountains. Meticulously modelled to represent real parts of the world



not just the railway lines, I include a picture here of the back street shanties from Rio to show how detailed all the modelling is.

The exhibit includes 1,300 trains made up of over 10,000 carriages, over 100,000 vehicles, approx. 500,000 lights, 130,000 trees, and over 400,000 human figures, a huge number appear at the outdoor stadium alone. A 1/87 figure is a tiny thing but some have been made to have moving arms so dancing girls or beer drinking revellers appear. There are lots of moving vehicles in many sections all controlled automatically with working traffic lights. In fact the control of this mega train set is more advanced than many real railway networks as the number of routes is so high. The control room looked like it was from NASA covering train operation, the road networks and flights in and out of the airport.



The whole family enjoyed the place, not least due to the numerous humorous vignettes placed amongst the landscape, not just at eye level. The place keeps you alert as trains run over head and below your feet visible through glass floor boards with scenes dotted everywhere. Even the Urinals had models in cabinets and CCTV from the airport playing.

continued.....

It really is a place that is worth visiting just to admire the sheer scale of this undertaking that still grows. While there we witnessed the building of 'Monaco' the next part of the world to be miniaturized. This will included a working 1/87 Formula 1 race.

I have only touched on what is visible to see in miniature, and much coverage is available on the web. What should be mentioned was the restaurant located inside was not in miniature, and served some decent food. The shop was not a model shop, no trains or modelling equipment on sale, just books and 1/87 cars as well as normal tourist tat. In a couple of years I aim to return as after 6 hours there I still felt there was more to see and by then the newest area will be complete with 'Patagonia' then underway.

Sibo

